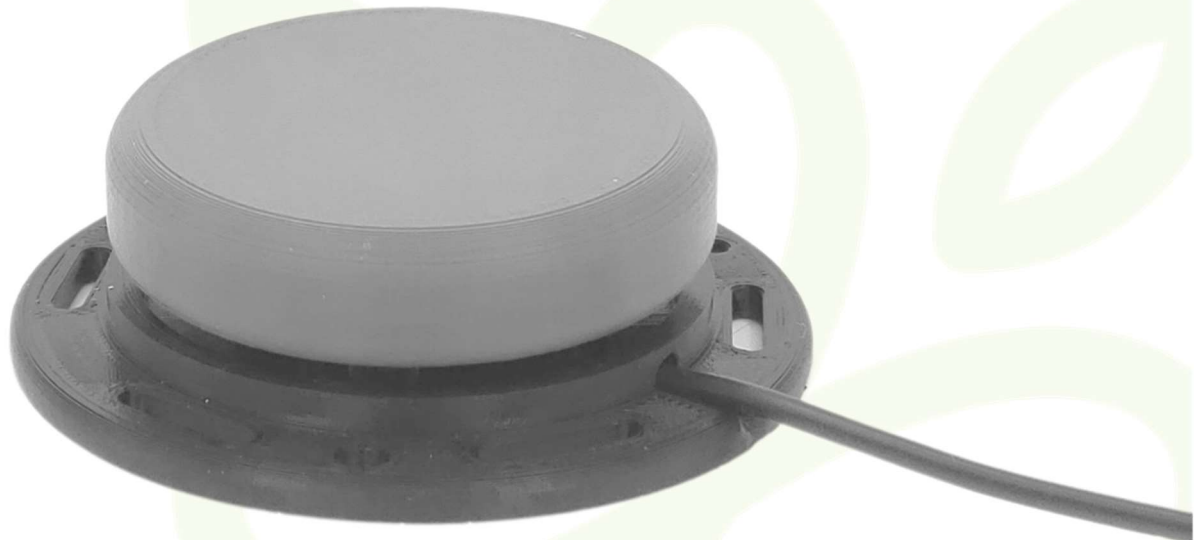


# Alternative Access Controls Product Guide

Rehabilitation Centre for Children



## Table of Contents

Introduction .....	2
Computer Access .....	3
Wireless Switch Interface .....	4
Key Guards.....	5
Styluses .....	5
Toys .....	6
Cause & Effect Toy.....	7
Switch-Adapted Commercial Toy.....	7
Game Console Adapters .....	8
Nintendo Switch One Handed Adapters .....	9
Xbox One-Handed Adapter (Left or Right Hand) .....	10
Switches.....	11
MMC Light Touch Switch.....	12
MMC Interact Switch.....	12
MMC Low Profile Switch.....	13
MMC Unibody Switch .....	13
Appendix A: Requisition Forms .....	14
Appendix B: Assistive Technology Product Guide .....	15



## Introduction

The Rehabilitation Centre for Children is proud to assist families and caregivers by providing equipment to improve or maintain the quality of life for children and youth with disabilities. This document is a guide to the equipment made at the Rehabilitation Centre for Children and is meant to assist therapists in finding the right equipment for their clients.

To access this equipment please contact the Assistive Technology Department directly at 204-258-6661. Access to RCC equipment will require a prescription from a therapist.

If there is a specific need that cannot be met with the devices in this product guide, please submit an Assistive Technology Requisition Form (Appendix A) or see the Assistive Technology Product Guide (Appendix B).

### Contact Us

1155 Notre Dame Ave.  
Winnipeg, MB.  
R3E 3G1

Phone: 204-258-6661

Fax: 204-474-2387

Email: [at@rccinc.ca](mailto:at@rccinc.ca)

Web: [www.rccinc.ca](http://www.rccinc.ca)



# Computer Access



## Wireless Switch Interface

The Wireless Switch Interface is used to connect standard, wired accessible switches to wirelessly connected devices such as tablets, computers, and smartphones.

### Specifications

Dimensions: 3 × 2.37 × 1.4 inches

Materials: Plastic

### Available Accessories

- Switches

### Documentation

- User Guide



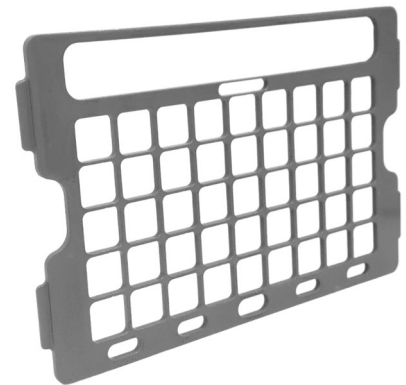
## Key Guards

Key Guards are installed on devices to provide control and accuracy. The grid size and shape can be customized based on the device and app.

### Specifications

Dimensions: Vary based on shape and size required.

Materials: Plastic



## Styluses

Styluses are used to increase accuracy with selection when using digital devices with touch screens such as tablets and smartphones. They are customized to accommodate for different hand shapes, sizes, strength and dexterity.

### Specifications

Dimensions: Vary based on shape and size required.

Materials: Plastic, Rubber, Fabric





# Toys



## Cause & Effect Toy

The Cause & Effect Toy is used to teach and practice the concept of cause and effect. It is also used to teach switch use. The toy allows children with limited access to toys the ability to control a musical and light up toy by pressing one button.

### Specifications

Dimensions (L×W×H): 6 × 1.25 × 5.5 inches

Materials: Plastic

### Available Accessories

- Switches



## Switch-Adapted Commercial Toy

RCC can modify commercial battery-operated toys in-house to be controlled through the use of a switch or multiple switches. Up to three switch ports can be added.

### Specifications

Materials: Vary based on selected commercial toy

Upholstery: Vary based on selected commercial toy

### Available Accessories

- Switches





# Game Console Adapters



## **Nintendo Switch One Handed Adapters (Angled or Flat)**

The Nintendo Switch One Handed Adapters are used to help children operate a controller with one hand. The adapter can be designed for left or right hand users.

### **Attribution**

This device was designed by Vexelius and is manufactured by RCC.

### **Specifications**

Materials: Plastic



## **Xbox One-Handed Adapter (Left or Right Hand)**

The Xbox One-Handed Adapters are used to help children operate a controller with one hand. The adapter can be designed for left or right hand users, and for Xbox One, Xbox Series S, and Xbox Series X controllers.

### **Specifications**

Materials: Plastic

### **Available Accessories**

- Joystick adapter
- Leg mount with adjustable strap



# Switches



## MMC Light Touch Switch

The Makers Making Change (MMC) Light Tough Switch is used to operate assistive devices with a simple click. Users can rest a finger on the switch and lightly press to activate, making it suitable for users with limited strength or movement.

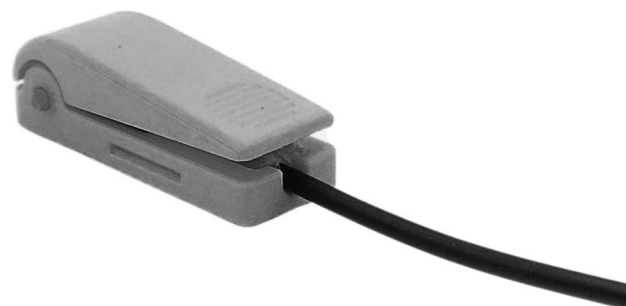
### Attribution

This device was designed by Makers Making Change and is manufactured by RCC.

### Specifications

Dimensions (L×W×H): 0.75 × 2 × 0.5 inches

Materials: Plastic



## MMC Interact Switch

The Makers Making Change (MMC) Interact Switch has a large activation area, making it suitable for users who have difficulty using small buttons or switches.

### Attribution

This device was designed by Makers Making Change and manufactured by RCC.

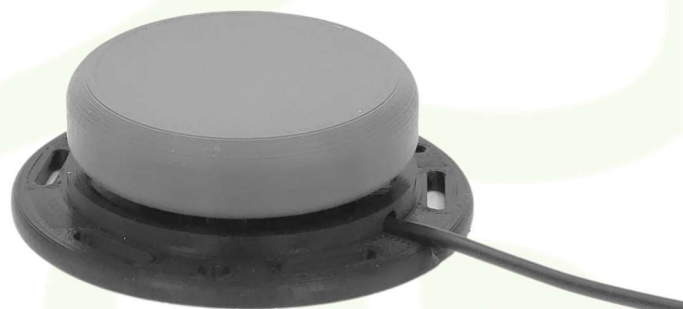
### Specifications

Dimensions: 3.25 inch diameter (base), 2.5 inch diameter (topper)  
1 inch height

Materials: Plastic

### Available Accessories

- Domed topper
- Textured topper



## MMC Low Profile Switch

The Makers Making Change (MMC) Plate Switch is a low-force switch with a large activation area and low profile. Users can operate assistive devices with a limited range of motion.

### Attribution

This device was designed by Makers Making Change and manufactured by RCC.

### Specifications

Dimensions (L×W×H): 2.5 × 2.5 × 0.5 inches

Materials: Plastic



## MMC Unibody Switch

The Makers Making Change (MMC) Unibody Switch is suitable for users with limited dexterity and finger movement.

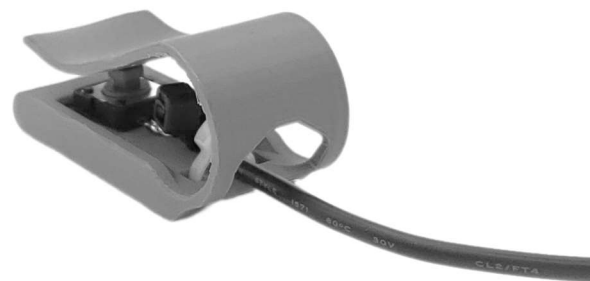
### Attribution

This device was designed by Makers Making Change and manufactured by RCC.

### Specifications

Dimensions (L×W×H): 0.75 × 2.25 × 1 inches

Materials: Plastic, Metal



## Appendix A: Requisition Forms

If you would like to request an RCC product from this guide, please ask a clinician to fill out the relevant **Assistive Technology Requisition and Measurement form** if applicable and submit it to the RCC Assistive Technology Department via Accuro or Fax. Measurement forms can be found at <https://rccinc.ca/programs-services/assistive-technology/> under Forms and Resources.

Fax: 204-474-2387

# Appendix B: Assistive Technology Product Guide

Please see our Assistive Technology Product Guide for equipment that may better suite your needs. The Product Guide can be found at <https://rccinc.ca/programs-services/assistive-technology/> under Forms and Resources.

